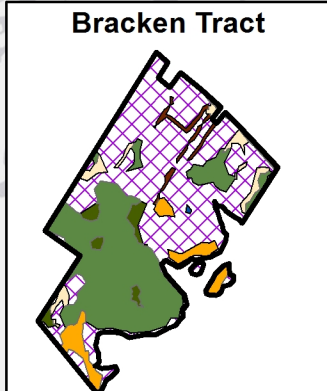
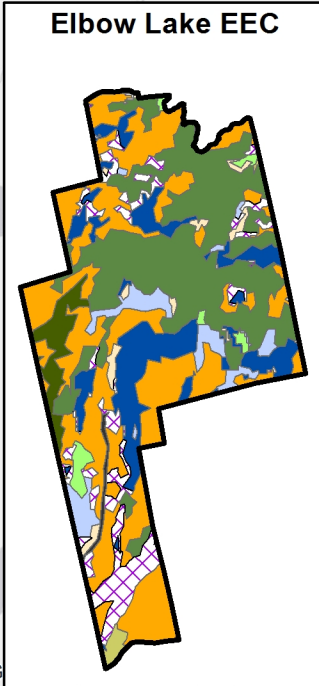
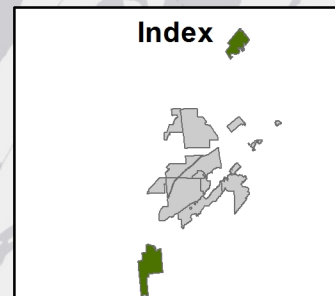
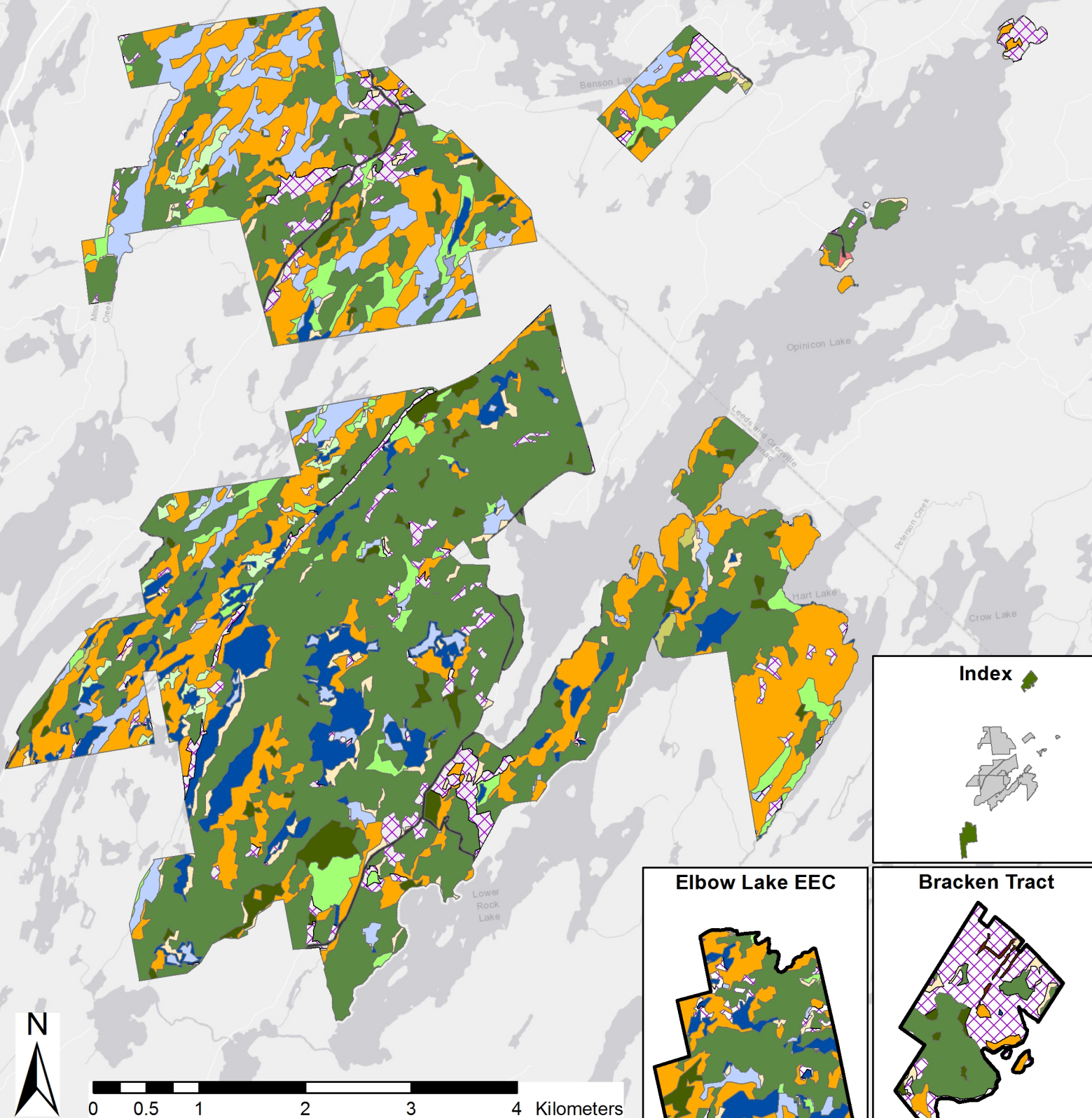


SOLRIS Landcover Classification of QUBS



Legend

- | | | |
|-------------------|------------------------|--------------------|
| Coniferous Forest | Open Tallgrass Prairie | Open Water |
| Forest | Tallgrass Savannah | Urban Recreational |
| Mixed Forest | Tallgrass Woodland | Transportation |
| Sparse Treed | Thicket Swamp | Undifferentiated |
| Hedge Rows | Treed Swamp | |

Southern Ontario Land Resource Information System (SOLRIS) data retrieved from the Government of Ontario (2019). Data has a MAU of 0.5 hectares. Undifferentiated land includes urban brown fields, upland thickets, forest clearings and all agricultural land not included in tilled class.

Scale: 1:50,000
 File name: SOLRISLandcover-Classification.mxd
 Map created by Keith Holmes (2020).