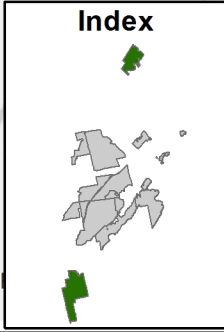
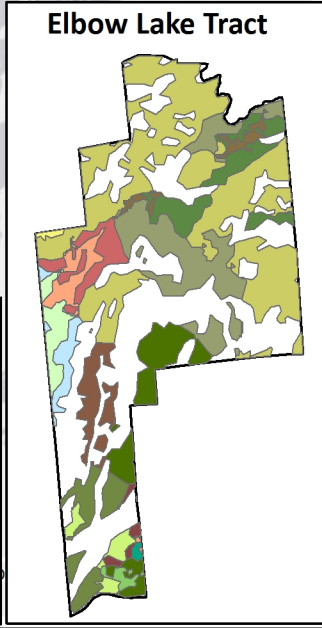
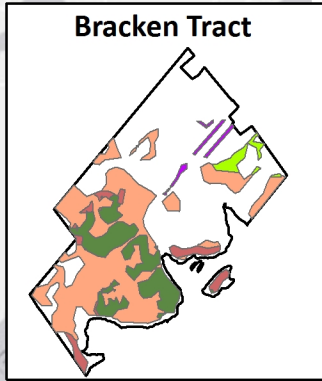
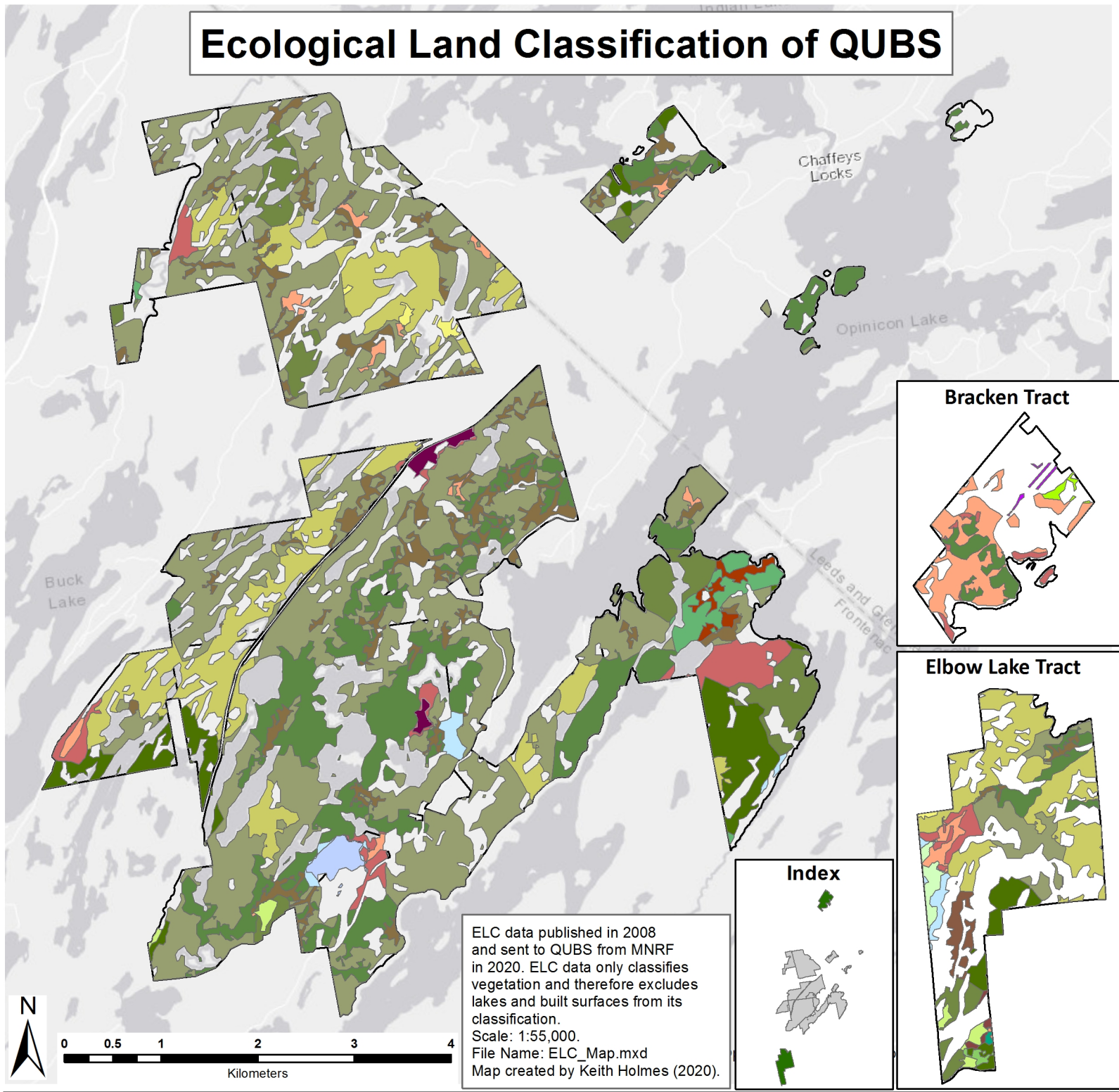
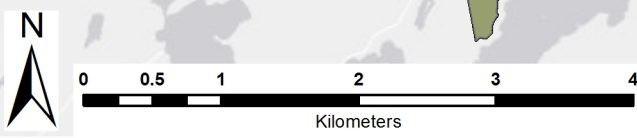


Ecological Land Classification of QUBS



ELC data published in 2008 and sent to QUBS from MNRF in 2020. ELC data only classifies vegetation and therefore excludes lakes and built surfaces from its classification.
 Scale: 1:55,000.
 File Name: ELC_Map.mxd
 Map created by Keith Holmes (2020).



Legend					
	Dry - Fresh Ironwood Deciduous Forest Type		Dry - Fresh Sugar Maple - White Ash Deciduous Forest Type		Fresh - Moist Freeman's Maple Lowland Deciduous Forest Type
	Dry - Fresh Sugar Maple - Hardwood Deciduous Forest Type		Dry - Fresh Sugar Maple - White Pine Mixed Forest Type		Fresh - Moist Sugar Maple - Hardwood Deciduous Forest Type
	Dry - Fresh Sugar Maple - Ironwood Deciduous Forest Type		Dry - Fresh White Pine - Hardwood Mixed Forest Type		Fresh - Moist White Cedar - Sugar Maple Mixed Forest Type
	Dry - Fresh Sugar Maple - Oak Deciduous Forest Type		Dry - Fresh White Pine - Maple Mixed Forest Type		Fresh - Moist White Pine - Hardwood Mixed Forest Type
					Fresh - Moist White Pine - Sugar Maple Mixed Forest Type
					Ironwood with white ash, sugar maple and oak Decd
					Mixed deciduous - sugar maple, ironwood, red maple Decd
					Freeman's Maple Mineral Deciduous Swamp Type
					Freeman's maple Swamp Type
					Sugar maple dominated with red maple Decd
					Sugar maple dominated with red oak and beech Decd
					Sugar maple dominated with red oak and ironwood Decd
					Sugar maple dominated with red oak, beech and ironwood Decd
					Hedgerow