

Queen's University Biological Station Species List: Beetles

The current list has been compiled by Dr. Ivy Schoepf, [QUBS Research Coordinator](#), in 2018 and includes data gathered by direct observation, collected by researchers at the station and/or assembled using digital distribution maps. A list of coleopteran that included longhorn beetles was originally compiled by Mark Conboy. The current list is building of that pre-existing and has been expanded to include all the coleopterans. The present list has been put together using resources from [The Natural Heritage Information Centre](#) (April 2018); [The IUCN Red List of Threatened Species](#) (February 2018); [iNaturalist](#) and [GBIF](#). Contact [Ivy](#) to report any errors, omissions and/or new sightings.

Based on the aforementioned criteria we can expect to find 229 beetle species (class: Insecta, Order: Coleoptera) present at QUBS. All species are considered QUBS residents unless otherwise stated. 15 species are considered to be introduced (*i*). Species are reported using their full taxonomy; common name and status, based on whether the species is of global or provincial concern (see Table 1 for details).

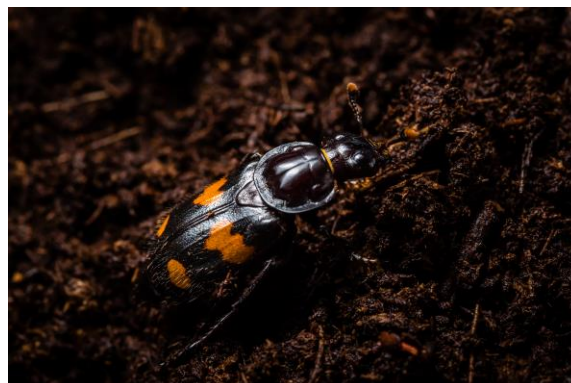


Figure 1. Burying beetles in the *Nicrophorus* genus are quite abundant at QUBS. Scientists have found these beetles to be excellent model systems to study a multitude of important biological questions. For examples, researchers from [Prof. Fran Bonier](#)'s lab from Queen's University are using Roundneck Sexton Beetles (*N. orbicollis*) to study plasticity in parental behaviour in response to temperature, whereas researchers from [Prof. Paul R. Martin](#)'s lab from Queen's University are looking at different species within the *Nicrophorus* genus to understand how closely related species coexist and how this affects species evolution and community structure. Photo courtesy of [Dr. Chi-Hang Yuen](#).

Table 1. Status classification reported for the beetles of QUBS. Global status based on IUCN Red List of Threatened Species rankings. Provincial status based on Ontario Natural Heritage Information Centre SRank.

Global Status	Provincial Status
Extinct (EX)	Presumed Extirpated (SX)
Extinct in the Wild (EW)	Possibly Extirpated (SH)
Critically Endangered (CR)	Critically Imperiled (S1)
Endangered (EN)	Imperiled (S2)
Vulnerable (Vu)	Vulnerable (S3)
Near Threatened (NT)	Apparently Secure (S4)
Least Concern (LC)	Secure (S5)
Data Deficient (DD)	Unrankable - insufficient information (SU)
Not Evaluated (NE)	Unranked - not yet assessed (SNR)
	Conservation Status Rank Not Applicable (SNA)

Family	Scientific Name	Common Name	Global Status	Provincial Status
Ampedidae	<i>Ampedus protervus</i>		NE	SNR
Anthribidae	<i>Euparius marmoreus</i>	Marbled Fungus Weevil	NE	SNR
Brentidae	<i>Arrenodes minutus</i>	Oak Timberworm	NE	SNR
Buprestidae	<i>Agrilus planipennis</i>	Emerald Ash Borer (<i>i</i>)	NE	SNA
	<i>Chalcophora fortis</i>		NE	SNR
	<i>Chrysobothris sexsignata</i>		NE	SNR
	<i>Dicerca caudata</i>		NE	SNR
	<i>Dicerca divaricata</i>	Flat-headed Hardwood Borer	NE	SNR
	<i>Dicerca lurida</i>		NE	SNR
	<i>Dicerca tenebrosa</i>		NE	SNR
Byturidae	<i>Byturus unicolor</i>	Raspberry Fruitworm Beetle	NE	S5
Cantharidae	<i>Ancistronycha bilineata</i>	Two-lined Leatherwing	NE	SNR
	<i>Ancistronycha neglecta</i>		NE	SNR
	<i>Cantharis rotundicollis</i>		NE	SNR
	<i>Cantharis rufa</i>		NE	SNA
	<i>Cantharis tuberculata</i>		NE	SNR
	<i>Chauliognathus pensylvanicus</i>	Goldenrod Soldier Beetle	NE	SNR
	<i>Malthodes parvulus</i>		NE	SNR
	<i>Podabrus brevicollis</i>		NE	SNR
	<i>Podabrus flavicollis</i>		NE	SNR
	<i>Podabrus modestus</i>		NE	SNR
	<i>Podabrus planulus</i>		NE	SNR
	<i>Podabrus rugosulus</i>		NE	SNR
	<i>Podabrus tricostatus</i>		NE	SNR
	<i>Rhagonycha fulva</i>	Common Red Soldier Beetle (<i>i</i>)	NE	SNA
	<i>Rhaxonycha carolina</i>		NE	SNR
	<i>Silis percomis</i>		NE	SNR
Carabidae	<i>Agonum retractum</i>		NE	SNR
	<i>Bembidion obtusum</i>	(<i>i</i>)	NE	SNA
	<i>Calleida punctata</i>		NE	SNR
	<i>Calosoma frigidum</i>		NE	SNR
	<i>Calosoma scrutator</i>	Fiery Searcher	NE	SNR
	<i>Calosoma wilcoxi</i>		NE	SNR
	<i>Carabus nemoralis</i>	Wood Ground-Beetle (<i>i</i>)	NE	SNA
	<i>Carabus sylvosus</i>		NE	S2
	<i>Chlaenius impunctifrons</i>		NE	SNR
	<i>Chlaenius tomentosus</i>		NE	SNR
	<i>Cicindela patruela</i>	Northern Barrens Tiger Beetle	NE	S1
	<i>Cicindela punctulata</i>	Punctured Tiger Beetle	NE	S5
	<i>Cicindela repanda</i>	Bronzed Tiger Beetle	NE	S5
	<i>Cicindela scutellaris</i>	Festive Tiger Beetle	NE	S5
	<i>Cicindela sexguttata</i>	Six-spotted Tiger Beetle	NE	S5
	<i>Dromius piceus</i>		NE	SNR
	<i>Harpalus affinis</i>	(<i>i</i>)	NE	SNA
	<i>Lebia ornata</i>		NE	SNR
	<i>Lebia viridis</i>		NE	SNR
	<i>Notiophilus aeneus</i>		NE	SNR
	<i>Olisthopus parmatus</i>		NE	SNR
<i>Pinacodera platicollis</i>		NE	SNR	
<i>Pterostichus mutus</i>		NE	SNR	
<i>Scarites subterraneus</i>		NE	SNR	
	<i>Sphaeroderus stenostomus</i>		NE	SNR
Cerambycidae	<i>Acanthocinus pusillus</i>		NE	SNA
	<i>Analeptura lineola</i>		NE	SNR
	<i>Anoplodera pubera</i>		NE	SNR

Family	Scientific Name	Common Name	Global Status	Provincial Status
	<i>Anthophylax attenuatus</i>		NE	SNR
	<i>Anthophylax cyaneus</i>		NE	SNR
	<i>Brachyleptura vegans</i>		NE	SNA
	<i>Callimoxys sanguinicollis</i>		NE	SNR
	<i>Centrodera decolorata</i>		NE	SNR
	<i>Clytus ruricola</i>		NE	SNR
	<i>Cyrtophorus verrucosus</i>	Ant-like Longhorn Beetle	NE	SNR
	<i>Dectes texanus</i>		NE	SNA
	<i>Desmocerus palliatus</i>	Elderberry Borer Beetle	NE	SNR
	<i>Ecyrus dasycerus</i>		NE	SNR
	<i>Enaphalodes rufulus</i>	Red Oak Borer	NE	SNR
	<i>Gaurotes cyanipennis</i>		NE	SNR
	<i>Glycobius speciosus</i>	Sugar Maple Borer	NE	SNR
	<i>Hyperplatys maculata</i>		NE	SNR
	<i>Idiopidonia pedalis</i>		NE	SNR
	<i>Judolia montivagans</i>		NE	SNR
	<i>Leptostylus transversus</i>		NE	SNR
	<i>Leptura plebeja</i>		NE	SNR
	<i>Liopinus alpha</i>		NE	SNR
	<i>Megacyllene robiniae</i>	Locust Borer Beetle	NE	SNA
	<i>Microgoes oculatus</i>		NE	SNR
	<i>Monochamus notatus</i>	Northeastern Pine Sawyer	NE	SNR
	<i>Monochamus scutellatus</i>	White-spotted Sawyer	NE	SNR
	<i>Oberea praelonga</i>		NE	SNR
Cerambycidae	<i>Orthosoma brunneum</i>	Brown Prionid	NE	SNR
	<i>Parandra brunnea</i>	Pole Borer	NE	SNA
	<i>Pidonia ruficollis</i>		NE	SNR
	<i>Pseudogaurotina abdominalis</i>		NE	SNR
	<i>Purpuricenus humeralis</i>		NE	SNR
	<i>Rhagium inquisitor</i>	Ribbed Pine Borer	NE	SNR
	<i>Saperda candida</i>	Round-headed Apple Tree Borer	NE	SNR
	<i>Saperda imitans</i>		NE	SNR
	<i>Saperda lateralis</i>	Red-edged Saperda	NE	SNR
	<i>Saperda obliqua</i>	Alder Borer	NE	SNR
	<i>Saperda populnea</i>	Eastern Gall Saperda	NE	SNR
	<i>Saperda tridentata</i>	Elm Borer	NE	SNR
	<i>Saperda vestita</i>	Linden Borer	NE	SNR
	<i>Stenocorus schaumii</i>		NE	SNR
	<i>Stenocorus vittiger</i>		NE	SNR
	<i>Stictoleptura canadensis</i>	Red-shouldered Pine Borer	NE	SNR
	<i>Strangalepta abbreviata</i>	Strangalepta Flower Longhorn	NE	SNR
	<i>Strangalia luteicornis</i>	Yellow-horned Lepture	NE	SNR
	<i>Strophiona nitens</i>	Chestnut Bark Borer	NE	SNR
	<i>Tetraopes tetrophthalmus</i>	Red Milkweed Beetle	NE	SNR
	<i>Trachysida mutabilis</i>		NE	SNR
	<i>Trigonarthris minnesotana</i>		NE	SNR
	<i>Trigonarthris proxima</i>		NE	SNR
	<i>Tylonotus bimaculatus</i>	Ash and Privet Borer	NE	SNR
	<i>Typocerus velutinus</i>	Banded Longhorn	NE	SNR
	<i>Xylotrechus colonus</i>	Rustic Borer	NE	SNR
Cerylonidae	<i>Philothermus glabriculus</i>		NE	SNR
	<i>Acalymma vittatum</i>	Striped Cucumber Beetle	NE	SNR
Chrysomelidae	<i>Calligrapha alni</i>	Russet Alder Leaf Beetle	NE	SNR
	<i>Capraita subvittata</i>		NE	SNR
	<i>Charidotella purpurata</i>	Small Orange Tortoise Beetle	NE	SNR

Family	Scientific Name	Common Name	Global Status	Provincial Status
Chrysomelidae	<i>Chrysochus auratus</i>	Dogbane Leaf Beetle	NE	SNR
	<i>Chrysomela scripta</i>	Cottonwood Leaf Beetle	NE	SNR
	<i>Crioceris duodecimpunctata</i>	Spotted Asparagus Beetle	NE	SNA
	<i>Deloyala guttata</i>	Mottled Tortoise Beetle	NE	SNR
	<i>Diabrotica undecimpunctata</i>	Spotted Cucumber Beetle	NE	SNR
	<i>Disonycha procera</i>		NE	SNR
	<i>Helocassis clavata</i>	Clavate Tortoise Beetle	NE	SNR
	<i>Labidomera clivicollis</i>	Milkweed Leaf Beetle	NE	SNR
	<i>Ophraella conferta</i>		NE	SNR
	<i>Oulema melanopus</i>	Cereal Leaf Beetle	NE	SNA
	<i>Plagiodera versicolora</i>	Willow Leaf Beetle	NE	SNA
	<i>Xanthonia decemnotata</i>		NE	SNR
Ciidae	<i>Ceracis thoracicornis</i>		NE	SNR
	<i>Cis fuscipes</i>	Minute Tree-fungus Beetle	NE	SNR
	<i>Dolichocis manitoba</i>		NE	SNR
	<i>Octotemnus laevis</i>		NE	SNR
Cleridae	<i>Enoclerus nigripes</i>		NE	SNR
	<i>Trichodes nutalli</i>	Red-blue Checkered Beetle	NE	SNR
Coccinellidae	<i>Brachiacantha ursina</i>	Ursine Spurleg Lady Beetle	NE	SNR
	<i>Chilocorus stigma</i>	Twice-stabbed Lady Beetle	NE	SNR
	<i>Coccinella novemnotata</i>	Nine-spotted Ladybug	NE	SH
	<i>Coccinella septempunctata</i>	Seven-spotted Ladybird Beetle (<i>i</i>)	NE	SNA
	<i>Coccinella transversoguttata</i>	Transverse Lady Beetle	NE	SH
	<i>Coccinella trifasciata</i>	Three-banded Ladybird Beetle	NE	SNR
	<i>Coleomegilla maculata</i>	Spotted Ladybird Beetle	NE	S5
	<i>Cycloneda munda</i>	Polished Lady Beetle	NE	SNR
	<i>Harmonia axyridis</i>	Asian Lady Beetle (<i>i</i>)	NE	SNA
	<i>Myzia pullata</i>	Streaked Lady Beetle	NE	SNR
	<i>Propylea quatuordecimpunctata</i>	Fourteen-spotted Lady Beetle (<i>i</i>)	NE	SNA
	<i>Psyllobora vigintimaculata</i>	Twenty-spotted Lady Beetle	NE	SNR
Cucujidae	<i>Cucujus clavipes</i>	Red Flat Bark Beetle	NE	SNR
Curculionidae	<i>Anthonomus quadrigibbus</i>		NE	SNR
	<i>Anthonomus signatus</i>		NE	SNR
	<i>Conotrachelus juglandis</i>		NE	SNR
	<i>Cylindridia prolixa</i>		NE	SNR
	<i>Hormorus undulatus</i>	Lily of the Valley Weevil	NE	SNR
	<i>Hypera nigrirostris</i>	Black-beaked Green Weevil	NE	SNR
	<i>Hypera postica</i>	Alfalfa Weevil (<i>i</i>)	NE	SNR
	<i>Otiorhynchus ovatus</i>	Strawberry Root Weevil (<i>i</i>)	NE	SNR
	<i>Pandeleteius hilaris</i>		NE	SNR
	<i>Phyllobius oblongus</i>	Brown Leaf Weevil (<i>i</i>)	NE	SNR
	<i>Pityogenes hopkinsi</i>		NE	SNR
	<i>Polydrusus formosus</i>	Green Immigrant Leaf Weevil (<i>i</i>)	NE	SNA
	<i>Polydrusus impressifrons</i>	(<i>i</i>)	NE	SNR
	<i>Sciaphilus asperatus</i>	(<i>i</i>)	NE	SNR
Dermestidae	<i>Dermestes lardarius</i>	Larder Beetle	NE	SNA
Dytiscidae	<i>Cybister fimbriolatus</i>	Fringed Diving Beetle	NE	SNR
	<i>Desmopachria convexa</i>		NE	SNR
	<i>Ilybiosoma seriatum</i>		NE	SNR
Elateridae	<i>Agriotes pubescens</i>		NE	SNR
	<i>Alaus oculatus</i>	Eastern Eyed Click Beetle	NE	SNR
	<i>Athous orvus</i>		NE	SNR
	<i>Athous rufifrons</i>		NE	SNR
	<i>Dalopius vagus</i>		NE	SNR
	<i>Glyphonyx testaceus</i>		NE	SNR

Family	Scientific Name	Common Name	Global Status	Provincial Status
Elateridae	<i>Hemicrepidius memnonius</i>		NE	SNR
	<i>Oxygonus obesus</i>		NE	SNR
Elmidae	<i>Dubiraphia vittata</i>		NE	SNR
	<i>Macronychus glabratus</i>		NE	SNR
Endomychidae	<i>Phymaphora pulchella</i>		NE	SNR
Haliplidae	<i>Brychius hungerfordi</i>	Hungerford's Crawling Water Beetle	NE	S1
	<i>Haliplus longulus</i>		NE	SNR
	<i>Haliplus pantherinus</i>		NE	SNR
Hydrophilidae	<i>Enochrus hamiltoni</i>		NE	SNR
	<i>Tropisternus mixtus</i>		NE	SNR
Lampyridae	<i>Ellychnia corrusca</i>	Winter Firefly	NE	SNR
	<i>Lucidota atra</i>	Black Firefly	NE	SNR
Leiodesidae	<i>Ptomaphagus brevior</i>		NE	SNR
Leiodidae	<i>Sciodrepoides watsoni</i>		NE	SNR
Lucanidae	<i>Dorcus parallelus</i>	Antelope Beetle	NE	SNR
Lycidae	<i>Calopteron reticulatum</i>	Banded Net-winged Beetle	NE	SNR
Melandryidae	<i>Dircaea liturata</i>		NE	SNR
Meloidae	<i>Meloe angusticollis</i>		NE	SNR
	<i>Nemognatha nemorensis</i>		NE	SNR
	<i>Zonitis bilineata</i>		NE	SNR
Melolonthidae	<i>Dichelonyx albicollis</i>		NE	SNR
	<i>Dichelonyx linearis</i>		NE	SNR
	<i>Macrodactylus subspinosus</i>	American Rose Chafer	NE	SNA
Mycetophagidae	<i>Mycetophagus punctatus</i>		NE	SNR
Nitidulidae	<i>Glischrochilus sanguinolentus</i>		NE	SNR
	<i>Stelidota octomaculata</i>		NE	SNR
Noteridae	<i>Hydrocanthus iricolor</i>		NE	SNR
Psephenidae	<i>Psephenus herricki</i>		NE	SNR
Pyrochroidae	<i>Dendroides canadensis</i>		NE	SNR
	<i>Neopyrochroa femoralis</i>		NE	SNR
	<i>Neopyrochroa flabellata</i>		NE	SNR
Rutelidae	<i>Pelidnota punctata</i>	Grapevine Beetle	NE	SNR
	<i>Popillia japonica</i>	Japanese Beetle (<i>i</i>)	NE	SNA
Scarabaeidae	<i>Copris fricator</i>		NE	SNR
Scirtidae	<i>Scirtes tibialis</i>		NE	SNR
Silphidae	<i>Necrodes surinamensis</i>	Red-lined Carrion Beetle	NE	S5
	<i>Necrophila americana</i>	American Carrion Beetle	NE	S5
	<i>Nicrophorus americanus</i>	American Burying Beetle	CR	SH
	<i>Nicrophorus orbicollis</i>	Roundneck Sexton Beetle	NE	S5
	<i>Nicrophorus pustulatus</i>	Pustulated Carrion Beetle	NE	S3
	<i>Nicrophorus sayi</i>		NE	S4
	<i>Nicrophorus tomentosus</i>	Tomentose Burying Beetle	NE	S5
	<i>Oiceoptoma inaequale</i>	Ridged Carrion Beetle	NE	SNR
Staphylinidae	<i>Acylophorus caseyi</i>		NE	SNR
	<i>Erichsonius patella</i>		NE	SNR
	<i>Gabrius ovaliceps</i>		NE	SNR
	<i>Gabrius picipennis</i>		NE	SNR
	<i>Homaeotarsus cribratus</i>		NE	SNR
	<i>Lathrobium othioides</i>		NE	SNR
	<i>Lathrobium simile</i>		NE	SNR
	<i>Lesteva pallipes</i>		NE	SNR
	<i>Lithocharodes longicollis</i>		NE	SNR
	<i>Ontholestes cingulatus</i>		NE	SNR
	<i>Philonthus caeruleipennis</i>		NE	SNR

Family	Scientific Name	Common Name	Global Status	Provincial Status
Staphylinidae	<i>Philonthus lomatus</i>		NE	SNR
	<i>Platydracus maculosus</i>		NE	SNR
	<i>Stenus mammops</i>		NE	SNR
	<i>Stenus pudicus</i>		NE	SNR
Stenotrachelidae	<i>Cephaloon lepturoides</i>		NE	SNR
Tenebrionidae	<i>Bolitotherus cornutus</i>	Forked Fungus Beetle	NE	SNR
	<i>Diaperis maculatus</i>		NE	SNR
	<i>Neomida bicornis</i>		NE	SNR
Tetratomidae	<i>Penthe pimelia</i>		NE	SNR
Thanerocleridae	<i>Zenodosus sanguineus</i>		NE	SNR