

Queen's University Biological Station Species List: Mammals

The current list has been compiled by Dr. Ivy Schoepf, [QUBS Research Coordinator](#), in 2018 and includes data gathered by direct observation, collected by researchers at the station and/or assembled using digital distribution maps. The list is based on a previous list created by Mark Conboy and Frank Phelan in August 2010, and has been updated using resources from [The Natural Heritage Information Centre](#) (April 2018); [The IUCN Red List of Threatened Species](#) (February 2018) and [iNaturalist](#). Contact [Ivy](#) to report any errors, omissions and/or new sightings.

Based on aforementioned criteria, we can expect to find 52 species of mammals (class: Mammalia) present at QUBS, including 46 residents, three introduced (*i*) and one vagrant (*v*). Two species, which historically occurred in the area, but have been extirpated (*e*), are also included in the list. Species are reported using their full taxonomy; common name and status, based on whether the species is of global or provincial concern (see Table 1 for details).



Figure 1. Immature White-tailed Deer (*Odocoileus virginianus*) are a common sight at QUBS towards the end of the summer. The impact that this species has on the native flora is being investigated by [Prof. Lonnie Aarssen](#) and [Prof. Paul Grogan](#) from Queen's University. Photo courtesy of [Ivy Schoepf](#).

Table 1. Status classification reported for the mammals of QUBS. Global status based on IUCN Red List of Threatened Species rankings. Provincial status based on Ontario Natural Heritage Information Centre SRank.

Global Status	Provincial Status
Extinct (EX)	Presumed Extirpated (SX)
Extinct in the Wild (EW)	Possibly Extirpated (SH)
Critically Endangered (CR)	Critically Imperiled (S1)
Endangered (EN)	Imperiled (S2)
Vulnerable (Vu)	Vulnerable (S3)
Near Threatened (NT)	Apparently Secure (S4)
Least Concern (LC)	Secure (S5)
Data Deficient (DD)	Unrankable - insufficient information (SU)
Not Evaluated (NE)	Unranked - not yet assessed (SNR)
	Conservation Status Rank Not Applicable (SNA)

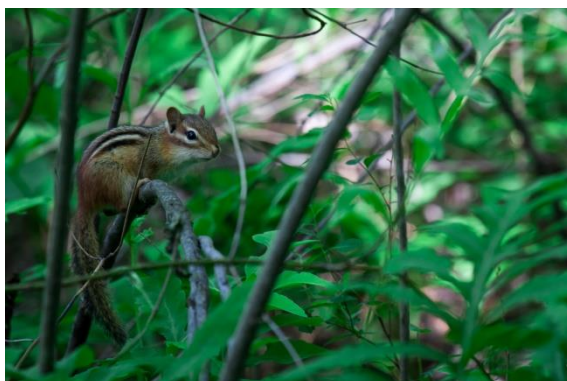


Figure 2. Eastern Chipmunks (*Tamias striatus*) are other common mammalian sights at QUBS. [Prof. Vincent Careau](#) from the University of Ottawa has used the population around [Opinicon Campus](#) as one of his model systems to investigate the evolutionary interactions between physiology and behaviour. Photo courtesy of [Ivy Schoepf](#).

Order	Family	Scientific Name	Common Name	Global Status	Provincial Status
Artiodactyla	Cervidae	<i>Alces americanus</i>	Moose (v)	LC	S5
		<i>Odocoileus virginianus</i>	White-tailed Deer	LC	S5
Carnivora	Canidae	<i>Canis latrans</i>	Coyote	LC	S5
		<i>Canis lupus</i>	Grey Wolf (e)	LC	S4
		<i>Urocyon cinereoargenteus</i>	Grey fox	LC	S1
		<i>Vulpes vulpes</i>	Red Fox	LC	S5
	Felidae	<i>Lynx canadensis</i>	Canada Lynx	LC	S5
		<i>Lynx rufus</i>	Bobcat	LC	S4
	Mephitidae	<i>Mephitis mephitis</i>	Striped Skunk	LC	S5
		<i>Lontra canadensis</i>	North American River Otter	LC	S5
		<i>Martes americana</i>	American Marten (e)	LC	S5
		<i>Martes pennanti</i>	Fisher	LC	S5
		<i>Mustela erminea</i>	Stoat	LC	S5
		<i>Mustela frenata</i>	Long-tailed Weasel	LC	S4
		<i>Neovison vison</i>	American Mink	LC	S4
	Procyonidae	<i>Procyon lotor</i>	Northern Raccoon	LC	S5
	Ursidae	<i>Ursus americanus</i>	American Black Bear	LC	S5
Chiroptera	Vespertilionidae	<i>Eptesicus fuscus</i>	Big Brown Bat	LC	S4
		<i>Lasionycteris noctivagans</i>	Silver-haired Bat	LC	S4
		<i>Lasiurus borealis</i>	Eastern Red Bat	LC	S4
		<i>Lasiurus cinereus</i>	Hoary Bat	LC	S4
		<i>Myotis leibii</i>	Eastern Small-footed Myotis	LC	S2
		<i>Myotis lucifugus</i>	Little Brown Bat	LC	S3
		<i>Myotis septentrionalis</i>	Northern Bat	LC	S3
<i>Perimyotis subflavus</i>	Tricolored Bat	LC	S3		
Eulipotyphla	Soricidae	<i>Blarina brevicauda</i>	Northern Short-tailed Shrew	LC	S5
		<i>Sorex cinereus</i>	Masked Shrew	LC	S5
		<i>Sorex fumeus</i>	Smoky Shrew	LC	S5
		<i>Sorex palustris</i>	Water Shrew	LC	S5
	Talpidae	<i>Condylura cristata</i>	Star-nosed Mole	LC	S5
		<i>Parascalops breweri</i>	Hairy-tailed Mole	LC	S4
Lagomorpha	Leporidae	<i>Lepus americanus</i>	Snowshoe Hare	LC	S5
		<i>Lepus europaeus</i>	European Hare (i)	LC	SNA
		<i>Sylvilagus floridanus</i>	Eastern Cottontail	LC	S5
Castoridae	<i>Castor canadensis</i>	American Beaver	LC	S5	
Rodentia	Cricetidae	<i>Microtus pennsylvanicus</i>	Meadow Vole	LC	S5
		<i>Myodes gapperi</i>	Southern Red-backed Vole	LC	S5
		<i>Ondatra zibethicus</i>	Muskrat	LC	S5
		<i>Peromyscus leucopus</i>	White-footed Mouse	LC	S5
		<i>Peromyscus maniculatus</i>	Deer Mouse	LC	S5
		<i>Synaptomys cooperi</i>	Southern Bog Lemming	LC	S4
	Dipodidae	<i>Napaeozapus insignis</i>	Woodland Jumping Mouse	LC	S5
		<i>Zapus hudsonius</i>	Meadow Jumping Mouse	LC	S5
	Erethizontidae	<i>Erethizon dorsatum</i>	North American Porcupine	LC	S5
	Muridae	<i>Mus musculus</i>	House Mouse (i)	LC	SNA
		<i>Rattus norvegicus</i>	Brown Rat (i)	LC	SNA
	Sciuridae	<i>Glaucomys sabrinus</i>	Northern Flying Squirrel	LC	S5
		<i>Glaucomys volans</i>	Southern Flying Squirrel	LC	S4
		<i>Marmota monax</i>	Woodchuck	LC	S5
		<i>Sciurus carolinensis</i>	Eastern Gray Squirrel	LC	S5
<i>Tamias striatus</i>		Eastern Chipmunk	LC	S5	
<i>Tamiasciurus hudsonicus</i>	Red Squirrel	LC	S5		