

# Trees, Shrubs and Vines of Queen's University Biological Station

---

November 2009

Mark A. Conboy and Adele Crowder

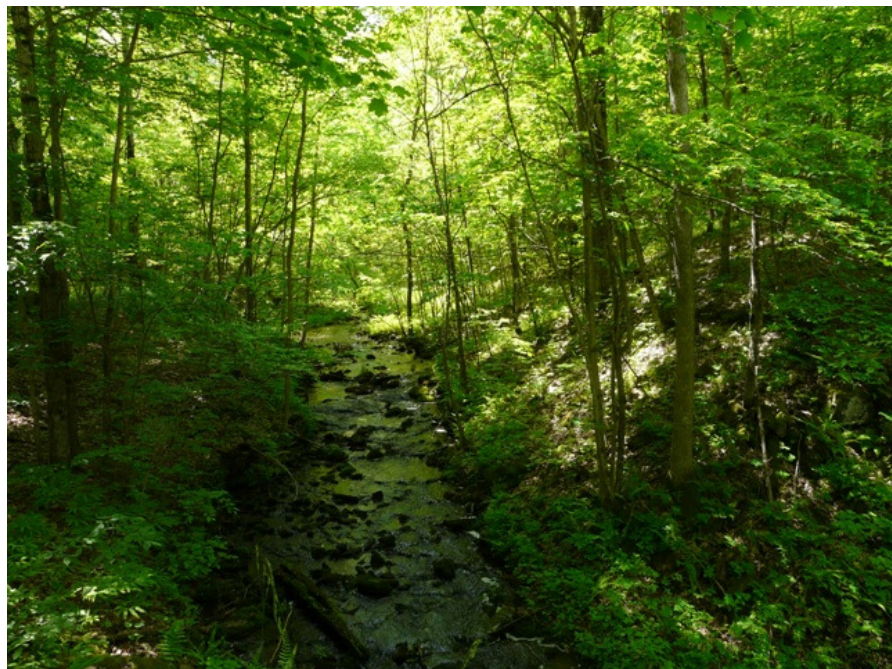
Queen's University Biological Station (N44°33' W76°19') has a wide diversity of terrestrial and wetland habitats with floristic influences from the Carolinian south and boreal north. This checklist covers 185 species of the trees, shrubs and vines that have been or are expected to be reported at QUBS. We have focused most of our effort on lands owned by Queen's University but also included in our area are the surrounding environs from Highway 10 in the west to Forfar in east, Newboro in the north and Morton in the south. We expect this list to be useful as a reference for the whole area but it is intended to focus on the station properties themselves.



Introduced Tartarian honeysuckle (*Lonicera tatarica*) can be a valuable nectar source for native species like the snowberry clearwing (*Hemaris diffinis*). Photo: Philina English.

The definition of tree, shrub or vine is inconsistent throughout the literature because growth forms vary within species based on genetic and environmental factors. For simplicity, we have included species on this list if they are found in Farrar (1995; *Trees in Canada*) or Soper and Heimburger (1982; *Shrubs of Ontario*), with the exception of several vines which we have included but are not found in those publications. Scientific and common names on the checklist generally follow these references, but deviate in some cases to correspond with recent nomenclatural changes.

For each species we give a status based on extensive vegetation sampling at QUBS in 2008 and 2009 (Conboy, unpublished data). In addition Crowder et al



Characteristic second growth forest conditions at QUBS with an abundance of sugar maple (*Acer saccharum*) and ironwood (*Ostrya virginiana*). Photo: Mark Andrew Conboy

(1996; *Plants of the Kingston Region: 1996*) and Crowder (2008; *Update of Plants of the Kingston Region: 1996*) have provided valuable information for assigning a status to some species that were not adequately sampled in field work.

**Abundant** – extremely numerous, nearly impossible to miss even to the casual observer.

**Common** – observed regularly and in good numbers.

**Uncommon** – requires some effort to locate and may be missed on some outings.

**Rare** – either of very local distribution at QUBS or represented by limited observations.

**Undetermined** – status is unclear because data is deficient. Species in this category may be part of a complex of difficult to identify species (i.e. *Salix* or *Crataegus*) and have not received the proper attention of botanists at QUBS. Reports of any species in this category would be helpful in determining its true status at QUBS (see below).

**Hypothetical** – to our knowledge this species has not been reported at QUBS but it may occur. Much of QUBS land has received very little careful botanical study and it is possible that hypothetical species will be found. Please report any species in this category (see below).

**Extirpated** – thought to have once been native to QUBS but no longer occurs. However, it can be difficult to confirm historical occurrences of species.

The Fowler Herbarium at Queen’s University has an extensive collection of local plants. We did not search the herbarium records thoroughly for additional species records at QUBS. A comprehensive search of the collection would greatly aid our knowledge of the status and distribution of all trees, shrubs and vines at the station.

In addition to status we have included some notes about each species’ distribution, habitat and indigenoussness at QUBS. We have been intentionally vague about the locations of rarer species because of past problems with unscrupulous collectors and the sensitivity of some habitats to human intrusion (i.e. bogs).



Please report errors, omission, sightings information (especially of rare and hypothetical species) and suggested status changes to Mark Andrew Conboy (7mc19@queenssu.ca).

Swamps that are inundated with water in spring and early summer but dry up in late summer are home to a wide array of tree species including red maple (*Acer rubrum*), bur oak (*Quercus macrocarpa*) and blue-beech (*Carpinus caroliniana*).

| Scientific Name             | Common Name         | Status at QUBS | Comments  |
|-----------------------------|---------------------|----------------|---|
| <b>Taxaceae</b>             |                     |                |   |
| <i>Taxus canadensis</i>     | Canada Yew          | Hypothetical   | Not recorded at QUBS but is expected to occur   |
| <b>Pinaceae</b>             |                     |                |   |
| <i>Abies balsamea</i>       | Balsam Fir          | Uncommon       | Wetlands and forests; often early successional  |
| <i>Larix decidua</i>        | European Larch      | Rare           | Introduced. Planted at QUBS Point and in towns  |
| <i>Larix laricina</i>       | Tamarack            | Uncommon       | Bogs and marshes  |
| <i>Picea glauca</i>         | White Spruce        | Uncommon       | Individuals interspersed in forests; can occur in good numbers in some wetlands; also in plantations      |
| <i>Picea mariana</i>        | Black Spruce        | Rare           | Bogs and other wetlands   |
| <i>Picea abies</i>          | Norway Spruce       | Uncommon       | Introduced. Planted on farms, in plantations and towns (i.e. Elgin)                                       |
| <i>Pinus banksiana</i>      | Jack Pine           | Rare           | Possibly introduced to QUBS area. Planted in plantations; lone individuals were probably also planted     |
| <i>Pinus resinosa</i>       | Red Pine            | Common         | Some natural specimens in forests but most are in plantations   |
| <i>Pinus rigida</i>         | Pitch Pine          | Hypothetical   | Small colonies on granite barrens near Jones Falls; unlikely to be found at QUBS but should be looked for |
| <i>Pinus strobus</i>        | Eastern White Pine  | Abundant       | Most abundant conifer at QUBS; also used in plantations   |
| <i>Pinus sylvestris</i>     | Scotch Pine         | Rare           | Introduced. Planted in towns and around farms; may be found near abandoned farms at QUBS                  |
| <i>Tsuga canadensis</i>     | Eastern Hemlock     | Common         | Widespread; mainly second growth; old trees seem relatively scarce  |
| <b>Cupressaceae</b>         |                     |                |   |
| <i>Juniperus communis</i>   | Common Juniper      | Abundant       | Ridge-tops, old fields and barren ground  |
| <i>Juniperus virginiana</i> | Eastern Redcedar    | Abundant       | Ridge-tops, old pastures and fields; some in forests  |
| <i>Thuja occidentalis</i>   | Eastern White Cedar | Abundant       | Forests, wetlands and slopes; can form pure stands  |
| <b>Smilacaceae</b>          |                     |                |   |
| <i>Smilax herbacea</i>      | Carrion Flower      | Rare           | Forests and edges   |
| <i>Smilax hispida</i>       | Prickly Greenbrier  | Rare           | Forests, edges and swamps   |

## Salicaceae

---

|                              |                     |              |   |
|------------------------------|---------------------|--------------|---|
| <i>Populus alba</i>          | White Poplar        | Rare         | Introduced. Planted near settlements, roads and at Bracken Tract  |
| <i>Populus balsamifera</i>   | Balsam Poplar       | Uncommon     | Forest and edges  |
| <i>Populus deltoides</i>     | Eastern Cottonwood  | Uncommon     | Early successional situations and forest; sometimes very large specimens (i.e. at QUBS Point and Bracken Tract) |
| <i>Populus grandidentata</i> | Large-toothed Aspen | Common       | Widespread in forests   |
| <i>Populus nigra</i>         | Lombardy Poplar     | Rare         | Introduced. Planted on farms and in towns   |
| <i>Populus tremuloides</i>   | Trembling Aspen     | Common       | Forests and edges; some pure stands (i.e. Bracken Tract)  |
| <i>Salix alba</i>            | White Willow        | Rare         | Introduced. Planted at farms and along roadsides  |
| <i>Salix amygdaloides</i>    | Peachleaf Willow    | Hypothetical | May be tree- or shrub-sized   |
| <i>Salix bebbiana</i>        | Bebb's Willow       | Common       | Wetlands and edges of water bodies  |
| <i>Salix candida</i>         | Hoary Willow        | Hypothetical | Wetlands  |
| <i>Salix discolor</i>        | Pussy Willow        | Common       | Wetlands, wet fields and below power lines  |
| <i>Salix fragilis</i>        | Crack Willow        | Rare         | Adjacent to wetlands; sometimes planted   |
| <i>Salix humilis</i>         | Upland Willow       | Hypothetical | Wet or dry locations  |
| <i>Salix lucida</i>          | Shining Willow      | Undetermined | Wet locations   |
| <i>Salix nigra</i>           | Black Willow        | Undetermined | Wet locations   |
| <i>Salix pedicellaris</i>    | Bog Willow          | Hypothetical | Bogs and <i>Thuja</i> swamps  |
| <i>Salix petiolaris</i>      | Slender Willow      | Common       | Wet fields and other wet locations  |

## Myricaceae

---

|                            |           |        |   |
|----------------------------|-----------|--------|---|
| <i>Comptonia peregrina</i> | Sweetfern | Rare   | Local at wetland edges on the Massassauga Tract |
| <i>Myrica gale</i>         | Sweetgale | Common | Wetland interiors and edges                     |

## Juglandaceae

---

|                          |                   |          |   |
|--------------------------|-------------------|----------|---|
| <i>Carya cordiformis</i> | Bitternut Hickory | Abundant | Moist to dry forests  |
| <i>Carya ovata</i>       | Shagbark Hickory  | Common   | Dry forest and ridge tops   |
| <i>Juglans cinerea</i>   | Butternut         | Uncommon | Forests and edges. Provincially and nationally endangered. Almost all specimens at QUBS are infected with butternut canker ( <i>Sirococcus clavigignenti-juglandacearum</i> ). Please report all butternuts with GPS coordinates if possible. |
| <i>Juglans nigra</i>     | Black Walnut      | Rare     | Probably introduced to the QUBS area. In plantations at QUBS Point, some local farms and in towns. There may  |

be some natural stands of walnut near Forfar, but this has not been confirmed (pers comm Croskery 2009)

### Betulaceae

|                              |                   |          |   |
|------------------------------|-------------------|----------|---|
| <i>Alnus incana</i>          | Speckled Alder    | Common   | Wetlands, ponds and swales  |
| <i>Betula alleghaniensis</i> | Yellow Birch      | Common   | Moist to wet forest; swamps   |
| <i>Betula papyrifera</i>     | White Birch       | Common   | An early successional species in forest clearings; older specimens in some mature forests                     |
| <i>Carpinus caroliniana</i>  | Blue-Beech        | Common   | Moist to wet places in forests  |
| <i>Corylus americana</i>     | American Hazelnut | Uncommon | Forests; thick stands or individuals  |
| <i>Corylus cornuta</i>       | Beaked Hazelnut   | Common   | Forests; thick stands or individuals  |
| <i>Ostrya virginiana</i>     | Ironwood          | Abundant | Primarily in understory and an important early successional species; One of the most abundant species at QUBS |

### Fagaceae

|                              |                       |                     |   |
|------------------------------|-----------------------|---------------------|---|
| <i>Fagus grandifolia</i>     | American Beech        | Locally common      | Individual trees or nearly pure stands  |
| <i>Castanea dentata</i>      | American Chestnut     | Possibly extirpated | Drastic declines in Canada due to chestnut blight ( <i>Cryphonectria parasitica</i> ). We do not know whether chestnut occurred at QUBS but lumber from this species has been found in a barn near Forfar; it is unknown if the wood is from a local source (pers comm Croskery 2009) |
| <i>Quercus alba</i>          | Common White Oak      | Abundant            | Forests, fencerows, ridge-tops; dry sites   |
| <i>Quercus bicolor</i>       | Swamp White Oak       | Hypothetical        | May occur in swamps, but requires confirmation (Forsyth fide pers comm Connor 2009)   |
| <i>Quercus macrocarpa</i>    | Bur Oak               | Common              | Forests, fencerows and ridge-tops; wet or dry sites   |
| <i>Quercus muehlenbergii</i> | Common Chinquapin Oak | Rare                | Isolated trees and small stands in Pangman and Hughson Tracts; should be looked for elsewhere   |
| <i>Quercus rubra</i>         | Northern Red Oak      | Abundant            | Forests and ridge-tops  |

### Ulmaceae

|                            |                  |              |   |
|----------------------------|------------------|--------------|---|
| <i>Celtis occidentalis</i> | Common Hackberry | Hypothetical | Occurs near Smith's Falls; should be looked for near QUBS, but is unlikely to occur |
| <i>Ulmus americana</i>     | White Elm        | Abundant     | Forest and edge   |
| <i>Ulmus rubra</i>         | Slippery Elm     | Uncommon     | Forest and ridge tops   |

|                       |          |        |                       |
|-----------------------|----------|--------|-----------------------|
| <i>Ulmus thomasii</i> | Rock Elm | Common | Forest and ridge tops |
|-----------------------|----------|--------|-----------------------|

---

**Ranunculaceae**

|                           |                |          |                     |
|---------------------------|----------------|----------|---------------------|
| <i>Clematis virginica</i> | Virgin's-bower | Uncommon | Locally distributed |
|---------------------------|----------------|----------|---------------------|

---

**Berberidaceae**

|                          |                 |      |  |
|--------------------------|-----------------|------|--|
| <i>Berberis vulgaris</i> | Common Barberry | Rare | Introduced. Planted around abandoned farms and at towns; mainly on Bracken Tract |
|--------------------------|-----------------|------|--|

---

**Menispermaceae**

|                              |          |              |   |
|------------------------------|----------|--------------|---|
| <i>Menispermum canadense</i> | Moonseed | Hypothetical | Should be looked for growing on basic soils |
|------------------------------|----------|--------------|---|

---

**Fumariaceae**

|                        |                   |          |  |
|------------------------|-------------------|----------|--|
| <i>Adlumia fungosa</i> | Climbing Fumitory | Uncommon | Locally distributed at QUBS; known from Cape-Sauriol Tract, and formerly QUBS Point (pers comm Connor 2009) and Bonwill Tract (pers comm Pringle 2009) |
|------------------------|-------------------|----------|--|

---

**Grossulariaceae**

|                          |                    |          |                                       |
|--------------------------|--------------------|----------|---------------------------------------|
| <i>Ribes americanum</i>  | Wild Black Currant | Common   | Moist sites and rocky outcrops        |
| <i>Ribes cynosbati</i>   | Pasture Gooseberry | Common   | Moist or dry sites and rocky outcrops |
| <i>Ribes glandulosum</i> | Skunk Currant      | Common   | Moist sites and rocky outcrops        |
| <i>Ribes hirtellum</i>   | Wild Gooseberry    | Uncommon | Moist and wet sites; clearings        |

---

**Hamamelidaceae**

|                             |                    |              |  |
|-----------------------------|--------------------|--------------|--|
| <i>Hamamelis virginiana</i> | Common Witch-Hazel | Hypothetical | Isolated populations may occur near QUBS but requires confirmation |
|-----------------------------|--------------------|--------------|--|

---

**Rosaceae**

|                              |                        |              |   |
|------------------------------|------------------------|--------------|---|
| <i>Amelanchier alnifolia</i> | Saskatoon              | Hypothetical | Not yet recorded at QUBS but is expected to occur                     |
| <i>Amelanchier arborea</i>   | Downy Serviceberry     | Common       | Edges and ridge tops  |
| <i>Amelanchier laevis</i>    | Smooth Serviceberry    | Common       | Edges and ridge tops  |
| <i>Amelanchier spicata</i>   | Dwarf Serviceberry     | Common       | Ridge tops  |
| <i>Amelanchier sanguinea</i> | Roundleaf Serviceberry | Common       | Ridge tops  |
| <i>Aronia melanocarpa</i>    | Chokeberry             | Undetermined | Wetlands and ridge tops   |
| <i>Crataegus chrysocarpa</i> | Fireberry Hawthorn     | Hypothetical | Apparently rare in Ontario  |
| <i>Crataegus crusgalli</i>   | Cockspur               | Undetermined | Old fields; native to Ontario but probably previously planted in area |

|                                |                            |                |  |
|--------------------------------|----------------------------|----------------|--|
| <i>Crataegus punctata</i>      | Dotted Hawthorn            | Undetermined   | Old fields   |
| <i>Crataegus succulenta</i>    | Fleshy Hawthorn            | Undetermined   | Old fields   |
| <i>Malus coronaria</i>         | Wild Crabapple             | Hypothetical   | May be planted in the area; requires confirmation  |
| <i>Malus pumila</i>            | Common Apple               | Locally common | Introduced. Planted at numerous locations and found in early successional situations         |
| <i>Physocarpus opulifolius</i> | Eastern Ninebark           | Hypothetical   | Should be looked for on ridges   |
| <i>Potentilla fruticosa</i>    | Shrubby Cinquefoil         | Undetermined   | Wetlands and over limestone bedrock  |
| <i>Prunus americana</i>        | American Plum              | Hypothetical   | So far unknown at QUBS   |
| <i>Prunus avium</i>            | Sweet Cherry               | Hypothetical   | Introduced. Planted specimens may be found, but its occurrence has not yet been confirmed    |
| <i>Prunus nigra</i>            | Canada Plum                | Rare           | Hedgerows; has been found at Bracken Tract and a few other locations                         |
| <i>Prunus pensylvanica</i>     | Pin Cherry                 | Abundant       | Widespread; ridge-tops and sometimes in thickets   |
| <i>Prunus pumila</i>           | Sand Cherry                | Hypothetical   | Rare in Ontario  |
| <i>Prunus serotina</i>         | Black Cherry               | Common         | Forest or edge   |
| <i>Prunus virginiana</i>       | Choke Cherry               | Common         | Ridge-tops and sometimes in thickets   |
| <i>Pyrus communis</i>          | Pear                       | Uncommon       | Introduced. Found in towns and at farms and may be located at QUBS near abandoned farmsteads |
| <i>Rosa acicularis</i>         | Prickly Wild Rose          | Common         | Edges and clearings  |
| <i>Rosa blanda</i>             | Smooth Rose                | Uncommon       | Old fields and forest edges  |
| <i>Rosa canina</i>             | Dog Rose                   | Hypothetical   | Introduced. Should be looked for at abandoned farmsteads                                     |
| <i>Rosa carolina</i>           | Pasture Rose               | Hypothetical   | Should be looked for in old fields   |
| <i>Rosa palustris</i>          | Swamp Rose                 | Common         | Narrow wetlands next to lakes  |
| <i>Rubus allegheniensis</i>    | Allegheny Blackberry       | Common         | Edges and old fields   |
| <i>Rubus canadensis</i>        | Smooth Blackberry          | Uncommon       | Edges and old fields   |
| <i>Rubus flagellaris</i>       | Northern Dewberry          | Undetermined   | Dry locations  |
| <i>Rubus hispidus</i>          | Bristly Dewberry           | Undetermined   | Wet locations  |
| <i>Rubus idaeus</i>            | Wild Red Raspberry         | Common         | Introduced and naturalized. Old fields, edges of forests and roadsides                       |
| <i>Rubus occidentalis</i>      | Black Raspberry            | Undetermined   | Old fields and roadsides   |
| <i>Rubus odoratus</i>          | Purple Flowering Raspberry | Common         | Edges and in forests   |
| <i>Rubus pubescens</i>         | Dwarf Red Raspberry        | Uncommon       | Wet woodlands; sometimes wet fields  |
| <i>Sorbus americana</i>        | American Mountain-Ash      | Rare           | Reported in the Boston Wildlands (Kristensen)  |
| <i>Spiraea alba</i>            | Narrow-leaved Meadowsweet  | Abundant       | Old fields and wetland margins   |
| <i>Spiraea tomentosa</i>       | Steeple Bush               | Common         | Wet locations  |

**Leguminosae**

---

|                              |              |              |   |
|------------------------------|--------------|--------------|---|
| <i>Gleditsia triacanthos</i> | Honey-Locust | Hypothetical | Introduced. May be planted near towns   |
| <i>Robinia pseudoacacia</i>  | Black Locust | Rare         | Introduced. Restricted to certain localities (QUBS Point, Chaffey's Lock and along Opinicon Road) |

**Rutaceae**

---

|                               |                      |          |  |
|-------------------------------|----------------------|----------|--|
| <i>Zanthoxylum americanum</i> | Northern Prickly-Ash | Abundant | Openings, edges and sometimes in forests |
|-------------------------------|----------------------|----------|--|

**Anacardiaceae**

---

|                       |                |              |  |
|-----------------------|----------------|--------------|--|
| <i>Rhus aromatica</i> | Fragrant Sumac | Uncommon     | Ridges   |
| <i>Rhus copallina</i> | Dwarf Sumac    | Hypothetical | Rare in Ontario  |
| <i>Rhus glabra</i>    | Smooth Sumac   | Rare         | Old fields and roadsides   |
| <i>Rhus radicans</i>  | Poison-Ivy     | Abundant     | Trails, ridges, roadsides and in forests                               |
| <i>Rhus typhina</i>   | Staghorn Sumac | Abundant     | Old fields, roadsides and sometimes in forests                         |
| <i>Rhus vernix</i>    | Poison-Sumac   | Rare         | Boston Wildlands (Kristensen) and Opinicon Road Bog (pers comm Connor) |

**Aquifoliaceae**

---

|                               |                |        |                 |
|-------------------------------|----------------|--------|-----------------|
| <i>Ilex verticillata</i>      | Winterberry    | Common | Wetlands        |
| <i>Nemopanthus mucronatus</i> | Mountain Holly | Rare   | Wetland margins |

**Celastraceae**

---

|                           |                      |        |                                  |
|---------------------------|----------------------|--------|----------------------------------|
| <i>Celastrus scandens</i> | Climbing Bittersweet | Common | Forests, thickets and old fields |
|---------------------------|----------------------|--------|----------------------------------|

**Staphyleaceae**

---

|                           |                     |          |               |
|---------------------------|---------------------|----------|---------------|
| <i>Staphylea trifolia</i> | American Bladdernut | Uncommon | Moist forests |
|---------------------------|---------------------|----------|---------------|

**Aceraceae**

---

|                           |                |          |  |
|---------------------------|----------------|----------|--|
| <i>Acer platanoides</i>   | Norway Maple   | Rare     | Introduced. Planted in towns   |
| <i>Acer japonicum</i>     | Japanese Maple | Rare     | Introduced. Planted in Chaffey's Lock  |
| <i>Acer negundo</i>       | Manitoba Maple | Uncommon | Probably introduced. Found around abandoned farmsteads and disturbed areas (i.e. Bracken Tract) as well as towns |
| <i>Acer pensylvanicum</i> | Striped Maple  | Uncommon | Forests  |
| <i>Acer rubrum</i>        | Red Maple      | Abundant | Forests and adjacent to water bodies   |



|                         |                |          |  |
|-------------------------|----------------|----------|--|
| <i>Acer saccharinum</i> | Silver Maple   | Common   | Swamps and lakeshores; sometimes in nearly pure stands (i.e. Silver Maple Swamp) |
| <i>Acer saccharum</i>   | Sugar Maple    | Abundant | Widespread; most common tree at QUBS   |
| <i>Acer nigrum</i>      | Black Maple    | Rare     | So far only found on the Bonwill Tract   |
| <i>Acer spicatum</i>    | Mountain Maple | Uncommon | Forests; very local  |

### **Hippocastanaceae**

---

|                               |                       |      |   |
|-------------------------------|-----------------------|------|---|
| <i>Aesculus hippocastanum</i> | Common Horse-Chestnut | Rare | Introduced. Planted on farms and in towns |
|-------------------------------|-----------------------|------|---|

### **Rhamnaceae**

---

|                             |                        |              |  |
|-----------------------------|------------------------|--------------|--|
| <i>Ceanothus americanus</i> | New Jersey Tea         | Undetermined | Adjacent to bodies of water; also ridge tops       |
| <i>Rhamnus alnifolia</i>    | Alder-leaved Buckthorn | Undetermined | Wetlands   |
| <i>Rhamnus cathartica</i>   | Common Buckthorn       | Common       | Introduced and naturalized. Forests and old fields |
| <i>Rhamnus frangula</i>     | Glossy Buckthorn       | Hypothetical | Not yet confirmed at QUBS                          |

### **Vitaceae**

---

|                               |                  |          |                              |
|-------------------------------|------------------|----------|------------------------------|
| <i>Parthenocissus inserta</i> | Virginia Creeper | Abundant | Forests, edges and roadsides |
| <i>Vitis riparia</i>          | River Grape      | Abundant | Edges and roadsides          |

### **Tiliaceae**

---

|                        |                   |          |         |
|------------------------|-------------------|----------|---------|
| <i>Tilia americana</i> | American Basswood | Abundant | Forests |
|------------------------|-------------------|----------|---------|

### **Thymelaeaceae**

---

|                        |             |          |  |
|------------------------|-------------|----------|--|
| <i>Dirca palustris</i> | Leatherwood | Uncommon | Local occurrences near forest edges on the Hughson Tract |
|------------------------|-------------|----------|--|

### **Elaeagnaceae**

---

|                              |              |          |                  |
|------------------------------|--------------|----------|------------------|
| <i>Shepherdia canadensis</i> | Buffaloberry | Uncommon | Edges and ridges |
|------------------------------|--------------|----------|------------------|

### **Cornaceae**

---

|                            |                            |          |  |
|----------------------------|----------------------------|----------|--|
| <i>Cornus alternifolia</i> | Alternative-leaved Dogwood | Uncommon | Wetlands and forests                             |
| <i>Cornus amomum</i>       | Silky Dogwood              | Common   | Fields and clearings                             |
| <i>Cornus canadensis</i>   | Bunchberry                 | Uncommon | Locally occurring in forests and wetland margins |
| <i>Cornus foemina</i>      | Grey Dogwood               | Common   | Old fields; forms dense thickets                 |
| <i>Cornus rugosa</i>       | Round-leaved Dogwood       | Uncommon | Openings in forests and near creeks              |

|                           |                   |          |                             |
|---------------------------|-------------------|----------|-----------------------------|
| <i>Cornus stolonifera</i> | Red Osier Dogwood | Abundant | Wetlands, forests and edges |
|---------------------------|-------------------|----------|-----------------------------|

---

**Pyrolaceae**

|                             |            |          |               |
|-----------------------------|------------|----------|---------------|
| <i>Chimaphila umbellata</i> | Pipsissewa | Uncommon | Moist forests |
|-----------------------------|------------|----------|---------------|

---

**Ericaceae**

|                                |                       |              |   |
|--------------------------------|-----------------------|--------------|---|
| <i>Andromeda polifolia</i>     | Bog Rosemary          | Rare         | Local in bogs   |
| <i>Arctostaphylos uvaursi</i>  | Bearberry             | Rare         | Local on ridge tops                                     |
| <i>Chamaedaphne calyculata</i> | Leatherleaf           | Rare         | Very local on ridge tops and in bogs and other wetlands |
| <i>Epigaea repens</i>          | Trailing Arbutus      | Hypothetical | Should be looked for on sandy soils                     |
| <i>Gaultheria hispidula</i>    | Creeping Snowberry    | Rare         | Bogs  |
| <i>Gaultheria procumbens</i>   | Wintergreen           | Common       | Forests   |
| <i>Gaylussacia baccata</i>     | Black Huckleberry     | Uncommon     | Bogs  |
| <i>Kalmia angustifolia</i>     | Sheep Laurel          | Undetermined | Bogs  |
| <i>Kalmia polifolia</i>        | Bog Laurel            | Undetermined | Bogs  |
| <i>Ledum groenlandicum</i>     | Labrador-Tea          | Uncommon     | Wetlands  |
| <i>Vaccinium angustifolium</i> | Late Low Blueberry    | Abundant     | Rocky woods and ridge tops                              |
| <i>Vaccinium corymbosum</i>    | Highbush Blueberry    | Uncommon     | Rocky woods and adjacent to wetlands                    |
| <i>Vaccinium macrocarpa</i>    | Large Cranberry       | Undetermined | Bogs  |
| <i>Vaccinium myrtilloides</i>  | Velvet-leaf Blueberry | Undetermined | Rocky woods and adjacent to wetlands                    |
| <i>Vaccinium oxycoccos</i>     | Small Cranberry       | Rare         | Bogs; locally common                                    |

---

**Oleaceae**

|                               |              |          |  |
|-------------------------------|--------------|----------|--|
| <i>Fraxinus americana</i>     | White Ash    | Abundant | Widespread; one of the major forest trees at QUBS                        |
| <i>Fraxinus nigra</i>         | Black Ash    | Common   | Wetlands and creek beds  |
| <i>Fraxinus pennsylvanica</i> | Red Ash      | Common   | Forests and early successional habitats                                  |
| <i>Syringa vulgaris</i>       | Common Lilac | Common   | Introduced and naturalized. Planted in old fields, on farms and in towns |

---

**Bignoniaceae**

|                         |                  |      |  |
|-------------------------|------------------|------|--|
| <i>Catalpa speciosa</i> | Northern Catalpa | Rare | Introduced. Near settlements (i.e. Chaffey's Lock and Elgin) |
|-------------------------|------------------|------|--|

---

**Asclepiadaceae**

|                        |                     |                  |   |
|------------------------|---------------------|------------------|---|
| <i>Cynachum nigrum</i> | Dog-strangling Vine | Locally Abundant | Introduced and naturalized. Roadsides and fields where it can be locally abundant, but is generally uncommon. Appears to be spreading rapidly near Chaffey's Lock |
|------------------------|---------------------|------------------|---|

---

**Convolvulaceae**

|                         |               |      |  |
|-------------------------|---------------|------|--|
| <i>Cuscuta gronovii</i> | Common Dodder | Rare | Locally in swamps, marshes and along shorelines where it is parasitic on <i>Decodon</i> , <i>Lycopus</i> , <i>Vitis</i> , and several other genera |
|-------------------------|---------------|------|--|

---

**Solanaceae**

|                          |                   |        |  |
|--------------------------|-------------------|--------|--|
| <i>Solanum dulcamara</i> | Deadly Nightshade | Common | Introduced and naturalized. Chiefly around towns and farms |
|--------------------------|-------------------|--------|--|

---

**Rubiaceae**

|                                  |                |        |                                  |
|----------------------------------|----------------|--------|----------------------------------|
| <i>Cephalanthus occidentalis</i> | Buttonbush     | Common | Wetlands                         |
| <i>Mitchella repens</i>          | Partridgeberry | Common | Often growing below <i>Pinus</i> |

---

**Caprifoliaceae**

|                                |                       |              |  |
|--------------------------------|-----------------------|--------------|--|
| <i>Diervilla lonicera</i>      | Bush Honeysuckle      | Common       | Forests and clearings  |
| <i>Linnaea borealis</i>        | Twinflower            | Rare         | Wet forests and bogs   |
| <i>Lonicera canadensis</i>     | Fly Honeysuckle       | Undetermined | Forests and edges  |
| <i>Lonicera dioica</i>         | Climbing Honeysuckle  | Common       | Forests and sometimes clearings  |
| <i>Lonicera hirsuta</i>        | Hairy Honeysuckle     | Common       | Forests, wetland margins and clearings   |
| <i>Lonicera tatarica</i>       | Tartarian Honeysuckle | Common       | Introduced and probably naturalized. Old fields, roadsides, towns and farms; especially at Bracken Tract |
| <i>Sambucus canadensis</i>     | Common Elderberry     | Common       | Forests and sometimes clearings  |
| <i>Sambucus racemosa</i>       | Red Elderberry        | Common       | Forests and sometimes clearings  |
| <i>Symphoricarpos albus</i>    | Snowberry             | Uncommon     | Introduced and naturalized. Ridges and edges   |
| <i>Viburnum acerifolium</i>    | Maple-leaved Viburnum | Common       | Forests and sometimes ridge tops   |
| <i>Viburnum cassinoides</i>    | Wild Rasin            | Uncommon     | Wetlands   |
| <i>Viburnum lantanoides</i>    | Hobblebush            | Uncommon     | Wetland margins  |
| <i>Viburnum lentago</i>        | Nannyberry            | Common       | Early successional habitats and edges  |
| <i>Viburnum rafinesquianum</i> | Downy Arrowwood       | Common       | Edges, ridge tops and clearings  |
| <i>Viburnum trilobum</i>       | Highbush Cranberry    | Uncommon     | Wetland margins  |